



We make things move.
DB Cargo Nederland N.V.

January 2021



DB Cargo AG in figures

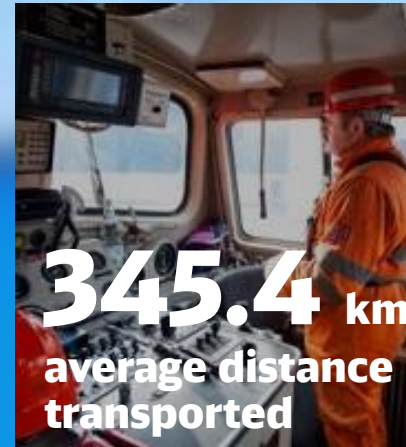
As at: 2019



29,525
employees in
17 national
companies



2,700
trains per day



345.4 km
average distance
transported



232.0
million of
tonnes of freight
transported



85,005
million tonne km
per year



2,680
locomotives
82,685
freight wagons



EUR 4,449
million in revenue
EUR -308
million in EBIT

Strong USP: Our European network



Your benefits at a glance:

- Comprehensive Europe-wide access
- Transport possible without own private siding in combination with railports
- High-frequency, reliable connections
- Usable also for small batch sizes
- Industry solutions available for the special service requirements of individual industries

More information is available at: netzwerk.dbcargo.com > Netzwerke (networks)

Railnet

- DB Cargo network
- DB Cargo subsidiary
- Port
- DBrailnet Germany
- DBrailnet Denmark
- DBrailnet France
- DBrailnet Italy
- DBrailnet Netherlands
- DBrailnet Poland
- DBrailnet Southeastern Europe



Your benefits at a glance:

- Fast and reliable rail solution for your cargo
- Specialists help you to plan and transport your cargo
- A complete logistics solution, tailored to your needs
- Numerous additional services bookable along the transport chain
- Cost-effective and environmentally friendly transport

More information is available at: netzwerk.dbcargo.com > Shuttle

Shuttle

- DB Cargo network
- DB Cargo subsidiary
- Port
- DBzeebrugge-shuttle (D, BE)
- DBmediterraeaan-shuttle (D, ES, F, AT, HU)
- DBantwerp-rhine-shuttle (D, NL, BE)
- Alsace-shuttle (D, FR)
- Burghausen-shuttle (D, NL, BE)
- Direktverbindungen



Business unit Netherlands

At a glance



Nanouke van 't Riet
CEO



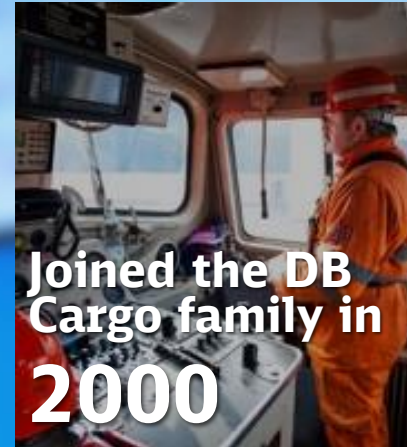
Jan Jansen
Head of International
Sales Netherlands

About us

- 100% subsidiary of DB Cargo AG, Europe's largest freight railway undertaking
- DB Cargo NL is the former freight division of NS which was acquired by DB in 2000
- Our mission: offering safe and reliable rail transport to and from the Netherlands

DB Cargo Nederland N.V. in figures

As at: 2019



Your strong logistics partner along the supply chain



Transports

Core products

- Single wagon transport
- Blocktrain transport
- Exceptional transport (bulky goods, heavy cargo)
- Intermodal transport
- Railports

Our customers

Strong foothold in markets

- Chemical industry
- Agricultural
- Ore
- Coal
- Steel

Our USP

- NEW: DBwestports express
- Strong domestic railnet
- Great accessibility to ports
 - Amsterdam
 - Rotterdam
 - Vlissingen
 - Terneuzen
 - Delfzijl
 - Moerdijk

Our services

Integrated logistics solutions in cooperation with competent partners:

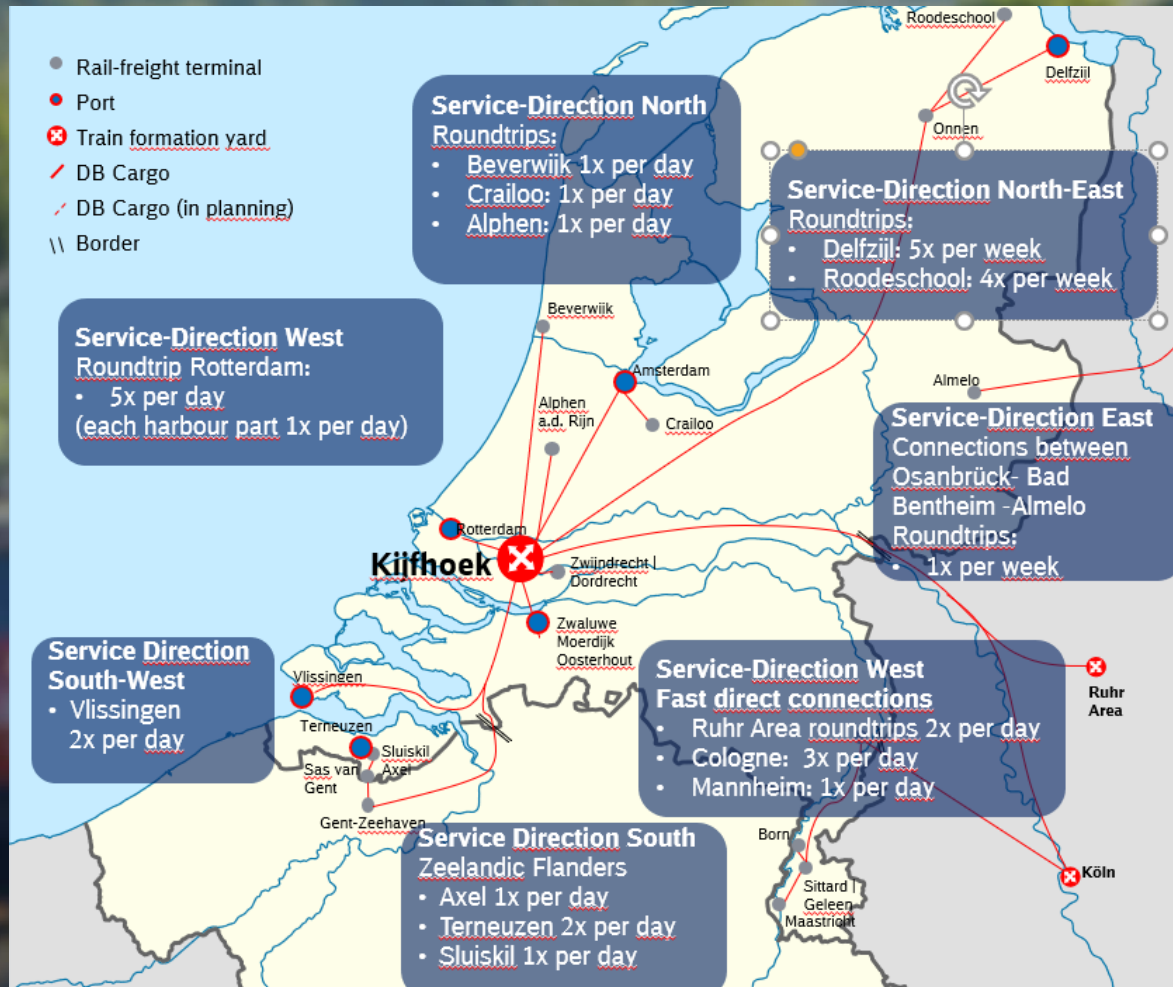
- Rail transportation in Europe as an element of combined transport
- Transshipment and rail terminal services
- Accessibility to Albatros Express Network
- Pre-carriage and onward carriage for intermodal rail transport
- Provision of equipment
- Load unit-related services
- Depot Services

Railnet Netherlands - At a glance



Your benefits

- Six daily services between the Netherlands and Germany
- Direct daily connections from industrial regions
- multiple domestic connections with high service frequencies
- Door-to-door logistics using railports in a dense rail network
- Usage of 100% green electricity
- Strong foothold in the chemical industry
- Own presence to all seaports and service via central hub Kijfhoek



Athus/Mont-Saint-Martin

Railnet Netherlands – DBwestports Express



Westports concept



Phase I

Rotterdam

Euromax, ECT, APMT II, RWG)

Antwerp

(MPET, DP World, PSA Noordzee T., Europa K869)



„Direct solution“ Duisburg, Neuss

Nuremberg Munich-Riem
Lu'hafen-KTL/ Burghausen
Mannheim Wolfurt

+ SWL-destinations

Phase II

Rotterdam

Euromax, ECT, APMT II, RWG)

Antwerp

(MPET, DP World, PSA Noordzee T., Europa K869)



„Direct solution“ Duisburg, Neuss

Nuremberg Burghausen
Lu'hafen-KTL Munich-Riem
 Wolfurt

+ Frankfurt-Ost Linz
 + Stuttgart Berlin
 + Mainz + Basel (DUSS)
 + Enns (AT) + Halle/ Saale

Phase III

Rotterdam

Euromax, ECT, APMT II, RWG)

Antwerp

(MPET, DP World, PSA Noordzee T., Europa K869)



„Direct solution“ Duisburg, Neuss

Nuremberg Burghausen
Lu'hafen-KTL Munich-Riem
Frankfurt-Ost Wolfurt

Stuttgart Linz
Mainz Berlin
Enns (AT) + Basel (DUSS)
 + Trier/ Saarl. + Halle/ Saale
 + Alsace (FR) + Bielefeld/
 Osnabrück

Railnet Netherlands – DBwestports Express



Your benefits

- Daily connection of all main port terminals via feeder trains to the strategic Hub Kijfhoek
- Daily connection from hub to important Hinterland destinations
- Direct connections from the ports to the area of Rhein-Ruhr
- Up to 50 trains per week reaching the main European economic centres
- Port-to-door services
- Fast transit times with same day or overnight connections
- Transports of all sizes

Your connections at a glance

Port	Terminals	Departure	Destinations
Rotterdam	ECT Euromax APMT I +II RWG	Sunday to Thursday	Ludwigshafen KTL / Mannheim Nuremberg TriCon Munich-Riem UBF Wolfurt CTT

Equipment:
Container flat wagons for all types of loading units

Fokus sector:
all types of cargo, excluding radioactive and explosive goods

Athus/Mont-Saint-Martin

Ports & Services

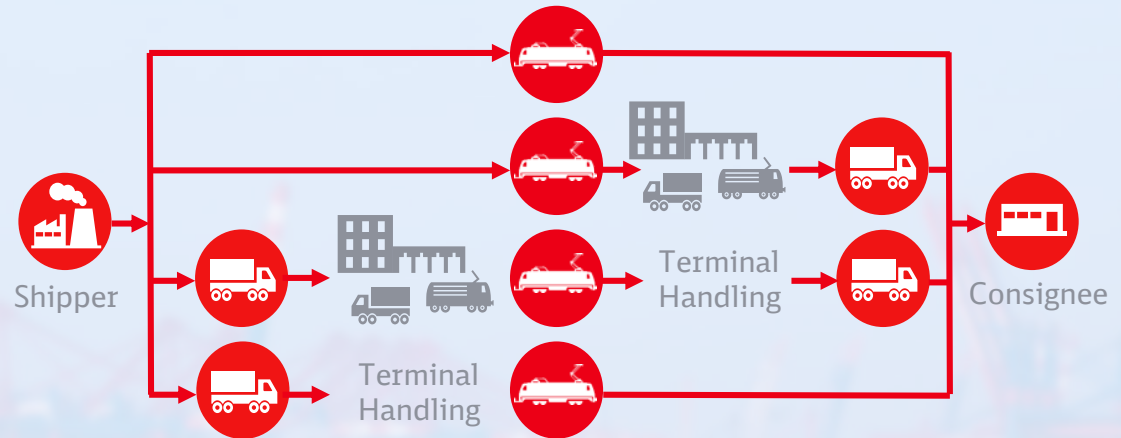
Dutch Ports



Your benefits

Own presence at all sea ports:

- Amsterdam
- Rotterdam
- Vlissingen
- Moerdijk
- Delfzijl
- Terneuzen



Wide ranging services

- Combines advantages of road, water and rail transportation
- Enables handling of different commodities
- Enhances the overall flexibility
- Offers value added services
- Enables the integration of the eco-friendly rail

Athus/Mont-Saint-Martin

Ports & Services

Port of Rotterdam



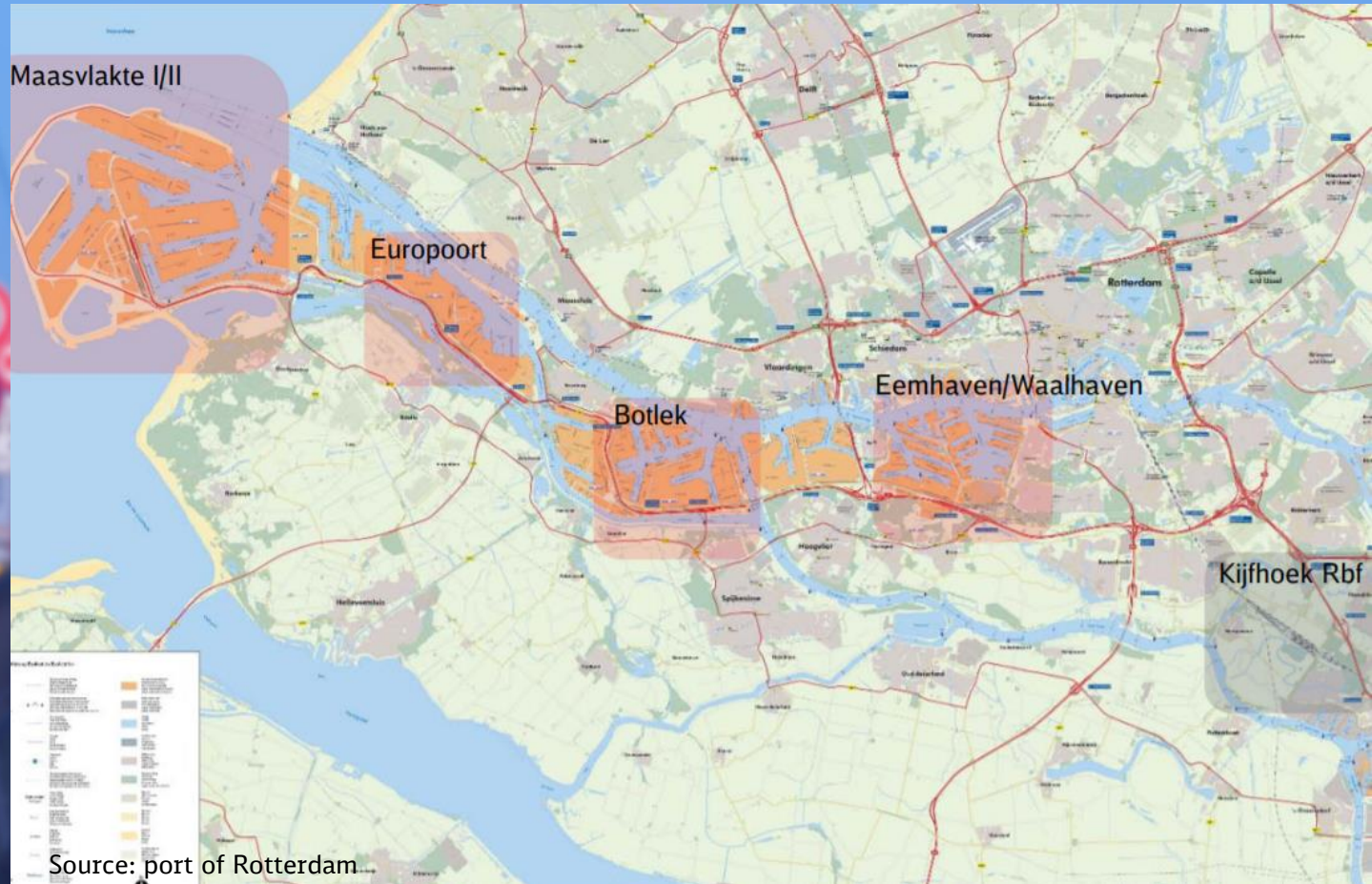
Your benefits

Fast connection to Europe's largest port with

- Container terminals
- Container depots
- Intermodal transportation
- Reefer containers

Handling of

- Dry, liquid & break Bulk
- LNG
- Agrofood
- Manufacturing Sector
- RoRo

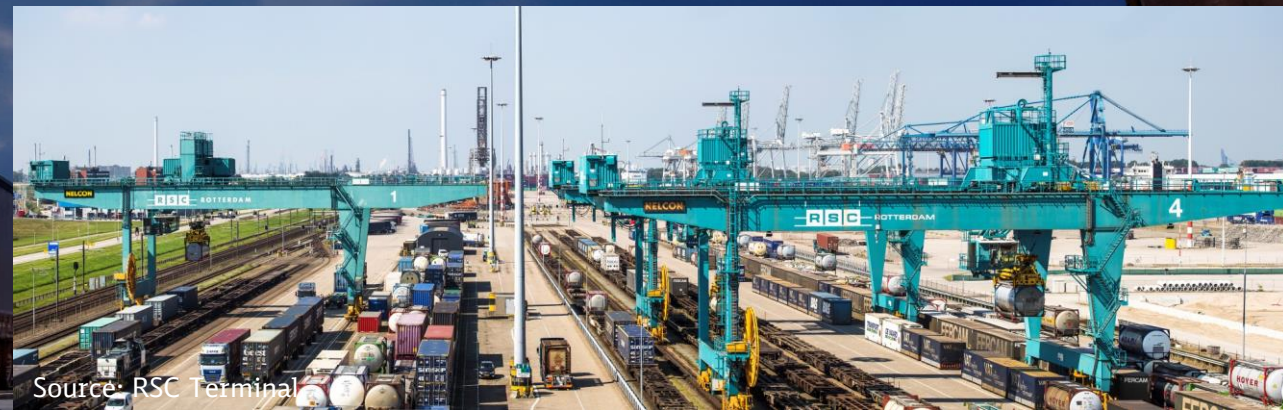


Rail Ports & Terminals– Rail Service Center Rotterdam



Your benefits

- Accessibility to the oldest intermodal RAIL terminal
- East exit for Hinterland rail traffic; West exit for Maasvlakte rail traffic
- 10 hec. rail facilities with 2 separate rail modules
- 12 hectare dedicated Storage facilities
- Capacity / handlings
 - Daily avg. of 800 rail related handlings daily
 - Avg. of 505 external truck related handlings
 - Handling of 30 trains on avg. per day



Eco Solutions – fulfilling the role of an Eco-pioneer



DB ECO NEUTRAL

- CO2 compensation
- Compensation of CO2-emissions by purchase of climate certificates
- Worldwide and also available at non-electrified routes
- Pre- & on-carriages at road supplement to DB Eco Plus

DB ECO PLUS

- CO2 avoiding
- 100% CO2-free by Eco-Power for rail transports in Germany and Austria
- Certified by TÜV
- Yearly certificate about avoidance

DB Cargo Nederland N.V.

Jan Jansen

Head of
International Sales Netherlands



Contact:

E-Mail: jan.jansen@deutschebahn.com

Phone: +31302353772

www.dbcargo.com



dbcargo.com



dbcargo.com/newsletter



[@DB_Cargo](https://twitter.com/DB_Cargo)



[DB Cargo AG](https://www.linkedin.com/company/db-cargo)